

Serving Dublin, Kildare, Wicklow, Meath.



## Welcome from Sam

This month we launch our Annual Impact Report 2016, highlighting what we have accomplished thanks to your support. As a community, we continued to face the rising tide of homelessness with increasing numbers of people, families and children coming to our doors for help at a frightening rate.

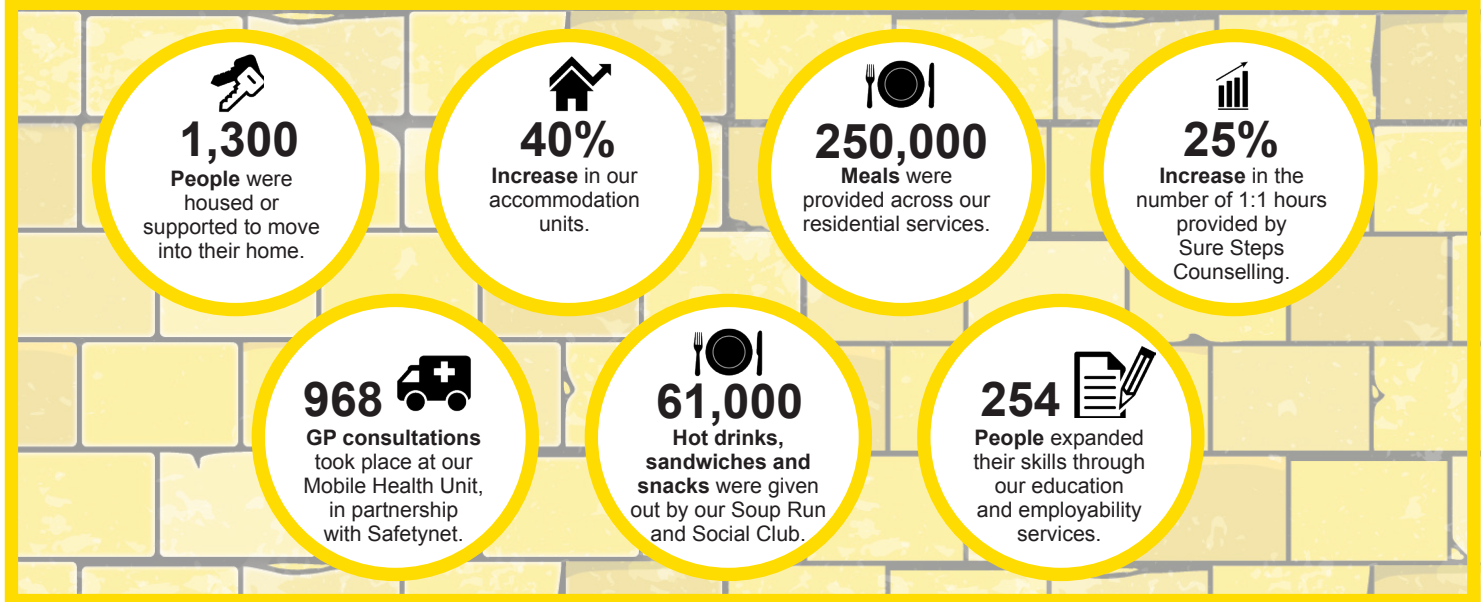
It is with your kindness we can continue to provide our unique services, giving our clients and residents hope for the future. We've achieved so much and together we still have a lot more to do.

To all our supporters, thank you for everything you do and for giving people the belief that they can move forward with their heads held high.

Thank you for continuing to be committed to creating environments where our clients and residents feel supported to rebuild their lives and reach their full potential, with our community by their side.

*Sam*  
Sam McGuinness  
Dublin Simon Community CEO

## This is How You are Rebuilding Lives.



## New Housing Services



Generosity from people like you means we were able to open the doors to our newly renovated projects at Sean MacDermott Street and Spire View during 2016. Spire View is comprised of seven apartments and Sean MacDermott Street provides 12 independent living units.

These services provide permanent accommodation for people and families who have experienced homelessness. Tenants received visiting support from our Support to Live Independently team to help them settle in so that they were comfortable living completely independently.

***"I am very grateful to Simon who worked very hard to help us move in. Now I can proudly get my family and friends to visit me in my new apartment. This means a lot."***

## Quality Awards



We have been awarded the EQUASS quality assurance in recognition of our social services. We are also now an Approved Housing Body registered with the Housing Finance Agency.

This recognition will help us expand where we are needed and would not be possible without our community of supporters like you.

## Your Impact in the Last Year



### Primary Care Support

With your support we established the **Primary Care Support Service in February 2016**. Comprised of two primary care nurse coordinators, the service provides enhanced medical support to clients and to ensure they are treated equitably by health care providers in the community.



### IN SIGHT Photo Project

Supporters like you organised the **IN SIGHT project** which worked with our clients on a photography project to help raise awareness and funds. The project has recently been awarded the Best Exhibition at the Event Industry Awards and a Bronze Bell at the ICAD Awards.



### New Counselling Rooms

Because of the kindness of our community we were able to officially open a new suite of counselling rooms based in **Inchicore in October 2016**. These are provided as part of our Sure Steps Counselling service for people who are homeless or at risk.

*“Hands down to Simon for all you do for people, whether it’s Soup Runs, outreach or not to mention the one closest to my heart Ushers Island. I wouldn’t be where I am today if it wasn’t for you guys and the support and after care. I’ll never forget what you guys did for me. Still and always will be remembered.”*

Sarah,  
Treatment Services Client



### Emergency Accommodation

Thanks to your generosity we were able to work together to ensure **Carman’s Hall** opened in time for **Christmas**. This new Supported Temporary Accommodation, provided in partnership with the Salvation Army is open 24/7 and provides 51 beds for men, women and couples.

*“Simon have really helped by pushing me on and supporting me. I had to do up my CV recently and I couldn’t fit everything into it. Now I have a job, a home and new opportunities. I’m thinking about going back to college next year. I think it’s good for anyone coming behind me to see that it is possible, if I can do it anyone can do it.”*

Patrick,  
Employability Client

## Build our Community of Support

It is only with the kindness of supporters like you that we are able to build our community.

- 1) Please fill out your Simon Yellow Brick enclosed with a message of support for our clients and residents.
- 2) Return this to us in the envelope provided.
- 3) We will build these bricks into a powerful piece that will be displayed in our services and at the Simon Home Run.

From all of us at Simon, Thank You for continuing to make a life-changing difference.



## Join us at the Simon Home Run



Our annual five mile run is now the **#SimonHomeRun**. Join the movement for homes with your friends and family and stand in solidarity with people facing homelessness by taking part on October 7th.

Sign Up at [www.homerun.ie](http://www.homerun.ie).

## Building Homes. Rebuilding Lives.

### Stay In Touch with Simon

Dublin Simon Community,  
1-2 Cope Street,  
Dublin 2.



Facebook @DublinSimonCommunity

Twitter @dublin\_simon

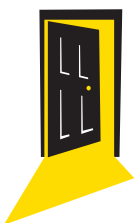
Web: [www.dubsimon.ie](http://www.dubsimon.ie)  
Email: [fundraising@dubsimon.ie](mailto:fundraising@dubsimon.ie)  
Tel: 01 671 5551



LinkedIn @Dublin Simon Community



Instagram @dublinsimoncommunity



Dublin  
**Simon**  
Community